

Manchester High School



TITLE I

Annual Family Partnership Meeting
2024-2025

Principal: Ms. Carrie Chambers

Assistant Principal: Mr. Demonta Prather

Instructional Lead Teacher: Mr. Mason Brackett

Counselor: Mrs. Jennifer Kite

Family Engagement Coordinator: Ms. Conner Bell

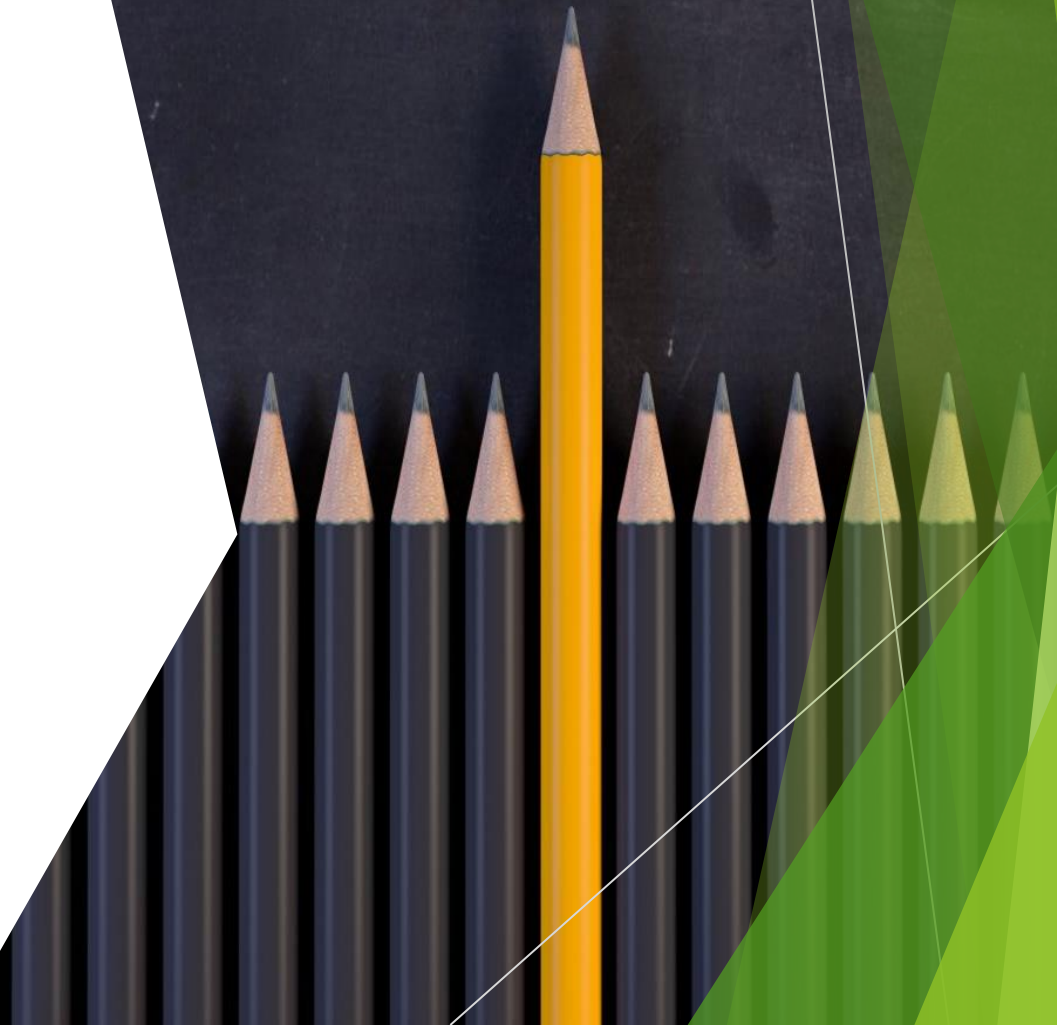
What is Title I ?

- ▶ Title I began in 1965 (ESEA) as a **federal program to ensure equal opportunities for low income school districts.**
- ▶ Through Title I, the federal government **disburses money to school districts based on the number of low-income families in each district** as determined by census data.
- ▶ The school **uses its Title I money to supplement and improve educational programs offered to help ALL students meet state standards.**

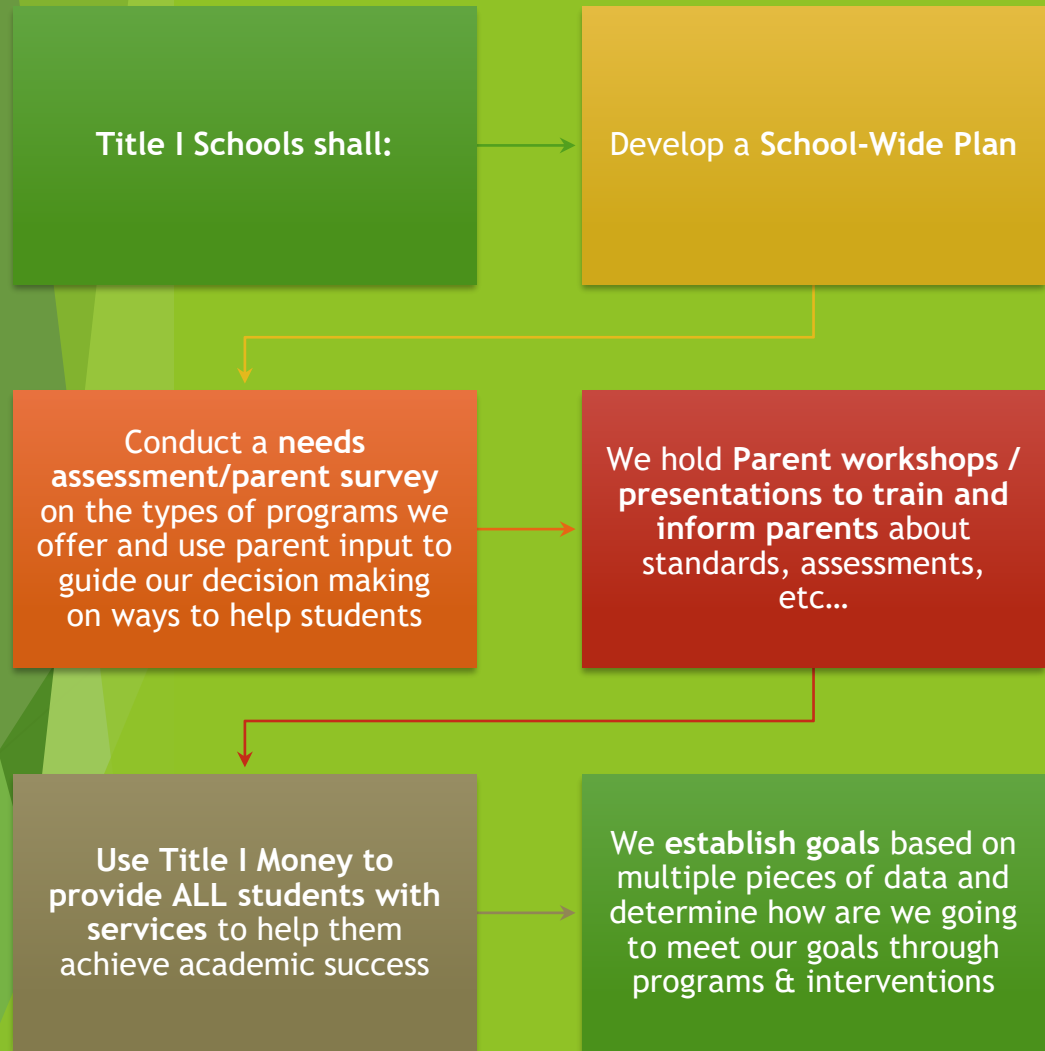


The Purpose of Title I

... is to ensure that **ALL students** have a **fair, equal, and significant opportunity to obtain a high-quality education and reach, at a minimum, proficiency on challenging State academic achievement standards and State academic assessments.**



All Meriwether County Schools are Title I Schools!



Accessibility



We want to make all documents and forms accessible to ALL parents in a manner that is easily read and understood.



Copies of documents/forms can be printed in large format (upon request) and in other languages (upon request).

How MHS uses Title I funds

Family engagement resources for families

Newsletters

Title I Parent Guidebooks

Student Datebooks

Afterschool Tutoring

Technology

Instructional Software

Staff Salaries

Supplemental Programs/Services

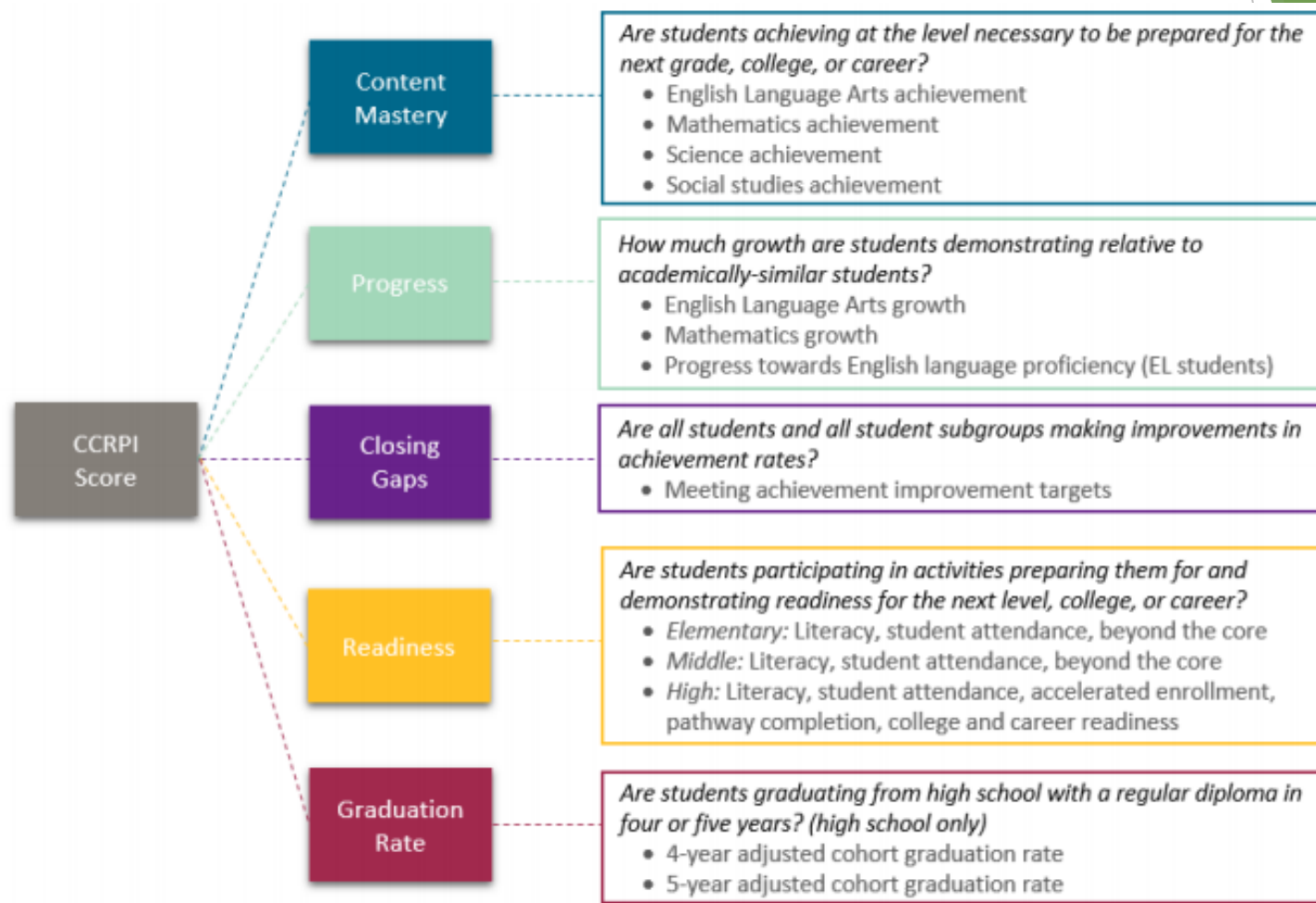
School Goals for FY25

- Manchester High School will obtain a 3% increase in the percentage of students scoring “DEVELOPING - or - Higher” on the 2025 Georgia End-of-Course Tests through the use of engaging, data-driven, rigorous, evidence-based instruction to meet the needs of all students.
- Increase the percentage of students in attendance for the 24-25 school year from 93.7% (23-24) to 94%
- Limit the number of repeat offenders (students with four or more discipline referrals) to each grade level in the 24-25 school year.
- By the end of the 2024-2025 school year, there will be monthly professional development using the results from the MCSS needs assessment survey administered in May 2024
- Increase the percentage of students in grades 9-11 scoring “reading on grade level” (as measured by MAP growth measurement) from the Beginning of the Year 2024-2025 to the End of the Year.

- Georgia uses the **College and Career Ready Performance Index (CCRPI)** for state accountability purposes.
- The CCRPI is like a **REPORT CARD** for schools.
- CCRPI has multiple indicators to determine a school's performance, rather than using a single test score given at one point in time.

College and Career Ready Performance Index ~ CCRPI

CCRPI measures...



School Curriculum

You can visit the GA DOE website – Georgia Standards to view more information about our standards for instruction and resources available.

www.georgiastandards.org

▶ *Georgia Standards of Excellence (GSE)*

▶ *Standards – for ELA, Math, Social Studies, Science*

Additional Information:

Connection Classes

Physical Education

Health

Language Arts Remedial

Business Computer Science/CTAE

Stakeholder Involvement

- ▶ **Stakeholders include:** School leaders, teachers, students, parents, family members, community members.
- ▶ **INPUT** is valued and appreciated. (Surveys, forums)
 - ▶ **Parent Engagement Plan**
 - ▶ **School-Family Compact**
 - ▶ **School Improvement Plan**
 - ▶ **Building Capacity**
 - ▶ **1% Parent Involvement Funds**

Parent & Family Engagement Plan

- This plan outlines how the school will involve parents and help them to help their children be successful.

1% Set Aside funds for Parent Involvement

- 1% of our Title I money is set aside for parent engagement.
- Parent Feedback is obtained through surveys.

School~ Family Compact

- The School~Family Compact is the signed agreement between all parties—parent/student/school stating how each party will help students be successful in school.

Building Capacity

- Suggestions on ways that the school can best help YOU to help your child succeed at school and home.

Parent Engagement Activities



- ▶ **Get Involved...**
 - ▶ Parent Involvement Meetings
 - ▶ Grade Level Meetings
 - ▶ Parent Conferences
 - ▶ School Council
 - ▶ Parent Advisory Committee
 - ▶ PTSSO Meetings
 - ▶ Workshops

Communication



- ▶ School WEBSITE
- ▶ District WEBSITE
- ▶ School Newsletters
- ▶ Social Media
- ▶ Flyers
- ▶ OneCALL
- ▶ Email
- ▶ REMIND
- ▶ Infinite Campus

Make sure that we have YOUR current phone number, email address and address on file.

Survey:



SCAN ME